

Now Arriving to...

# Highway 1A and Highway 22

Cochrane, Alberta





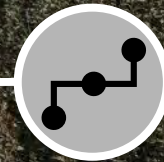
# ISL



DREW Radfelder

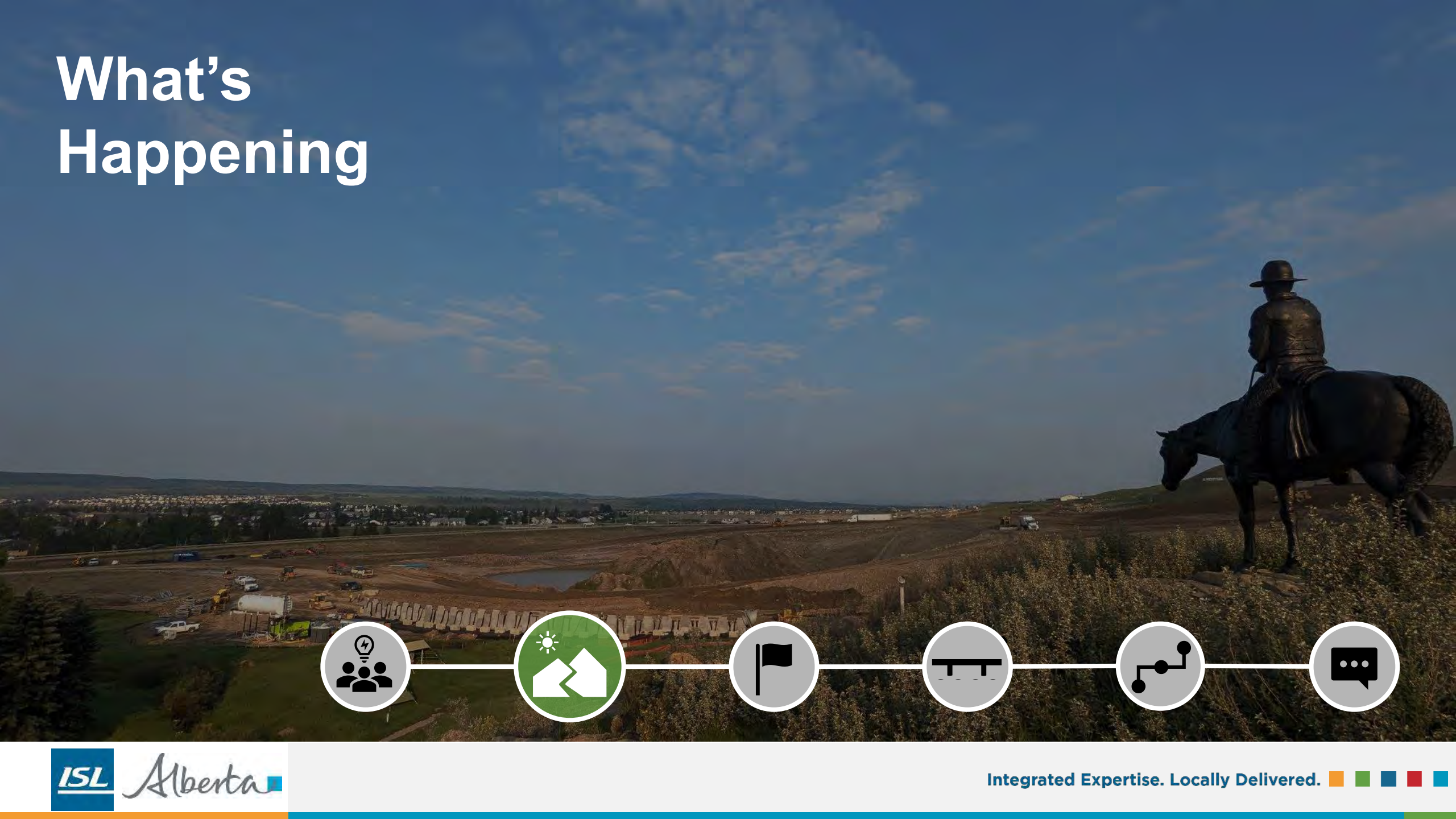


DOMINIC Cheng





# What's Happening







COCHRANE RANCHEHOUSE



DE-DESIGNATION OF HISTORIC LAND

PLANT SALVAGE



HISTORIC COCHRANE RANCHE



TOWN HWY 1A IMPROVEMENTS



TOWN WAT AND SAN

HIGHWAY 22

BIGHILL CREEK

NEW TWIN BRIDGES

PIPELINE CORRIDOR

HIGHWAY 1A

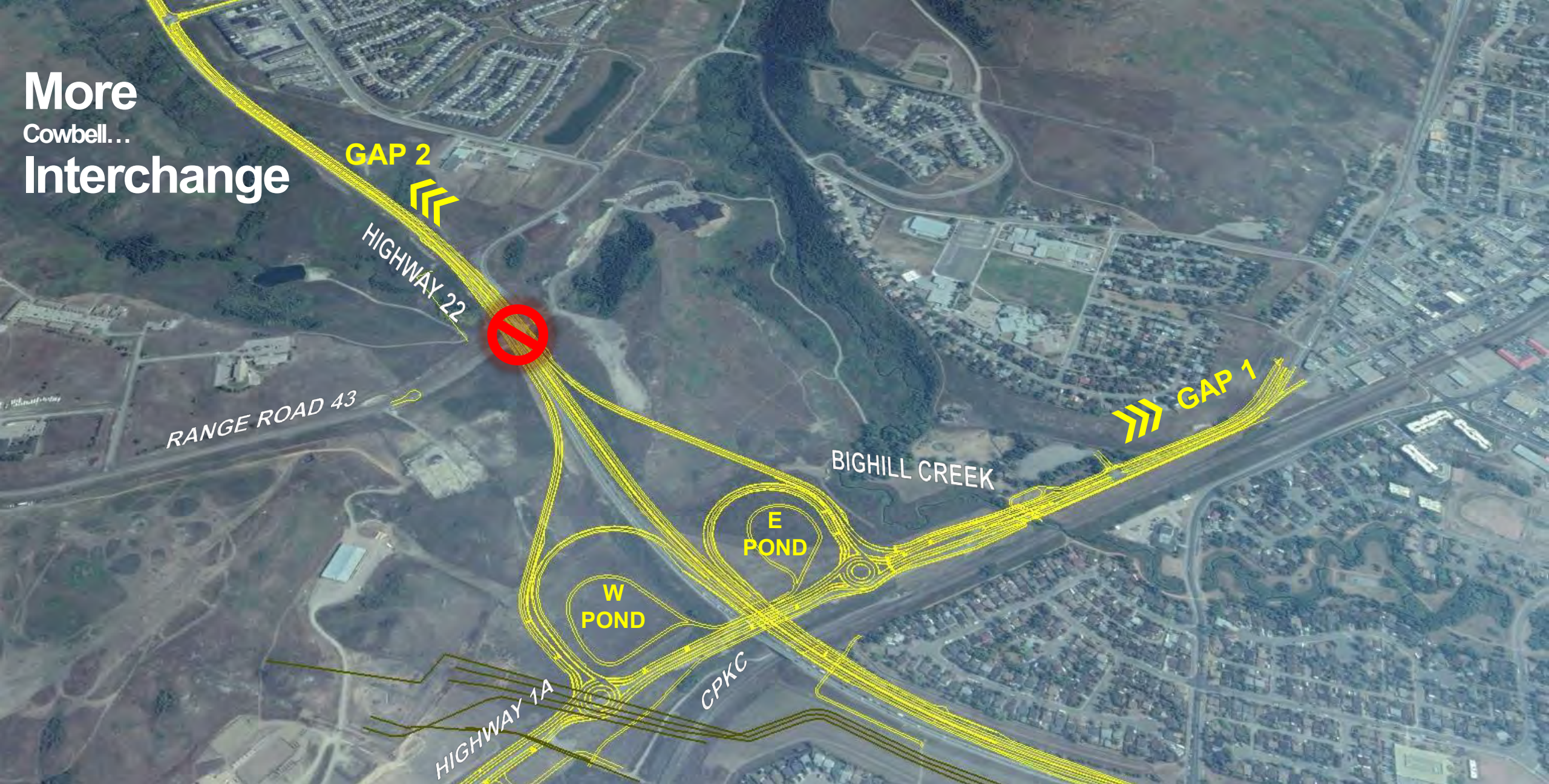
CPKC

RETIRE HWY 22 BRIDGE

RETIRE PED CULVERT



# More Cowbell... Interchange





# COCHRANE RANCHE



<https://alberta.preserve.ucalgary.ca/sites/cochrane-ranch/>





# PARTNERING





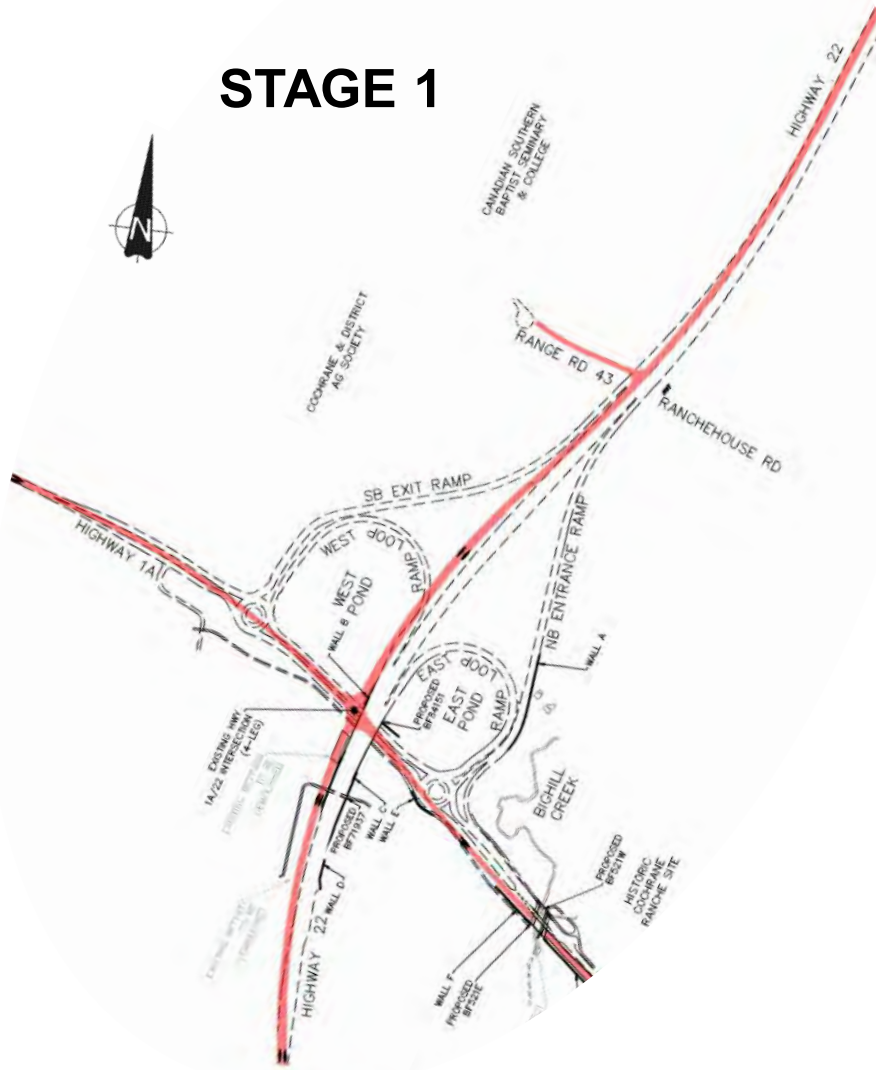
# Go Around





# DETOURS AND CONSTRUCTION STAGING

## STAGE 1



## STAGE 2



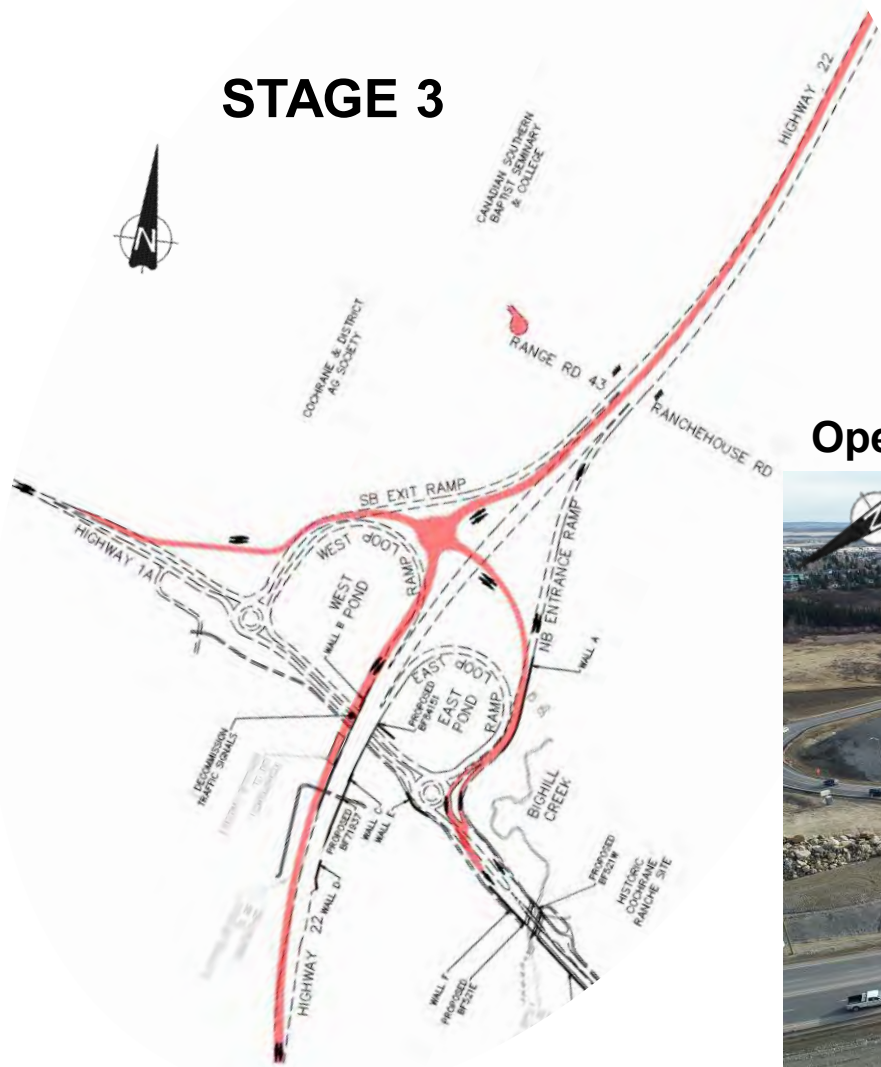
Opened to public August 10<sup>th</sup>, 2023





# DETOURS AND CONSTRUCTION STAGING

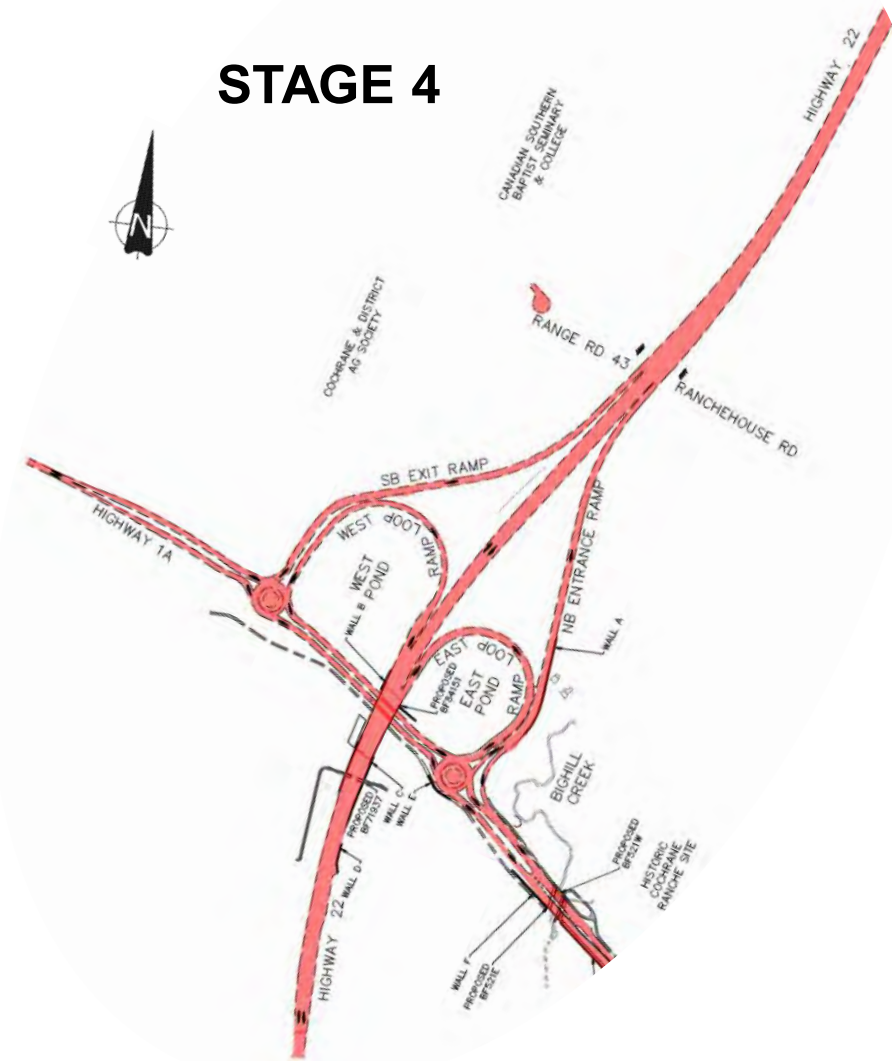
## STAGE 3



Opened to public November 3<sup>rd</sup>, 2023



## STAGE 4





# Rock On!



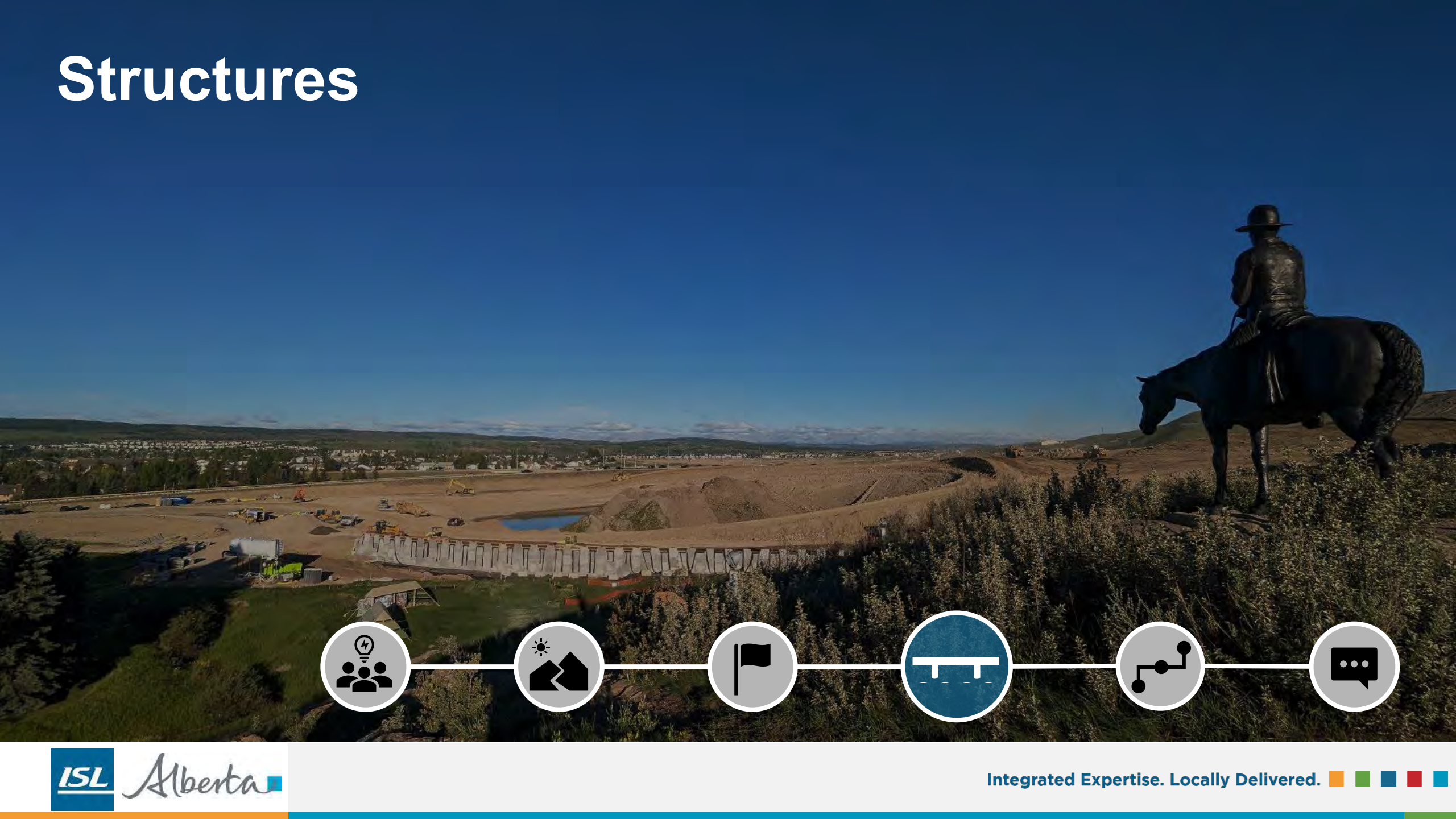


Rock On!





# Structures



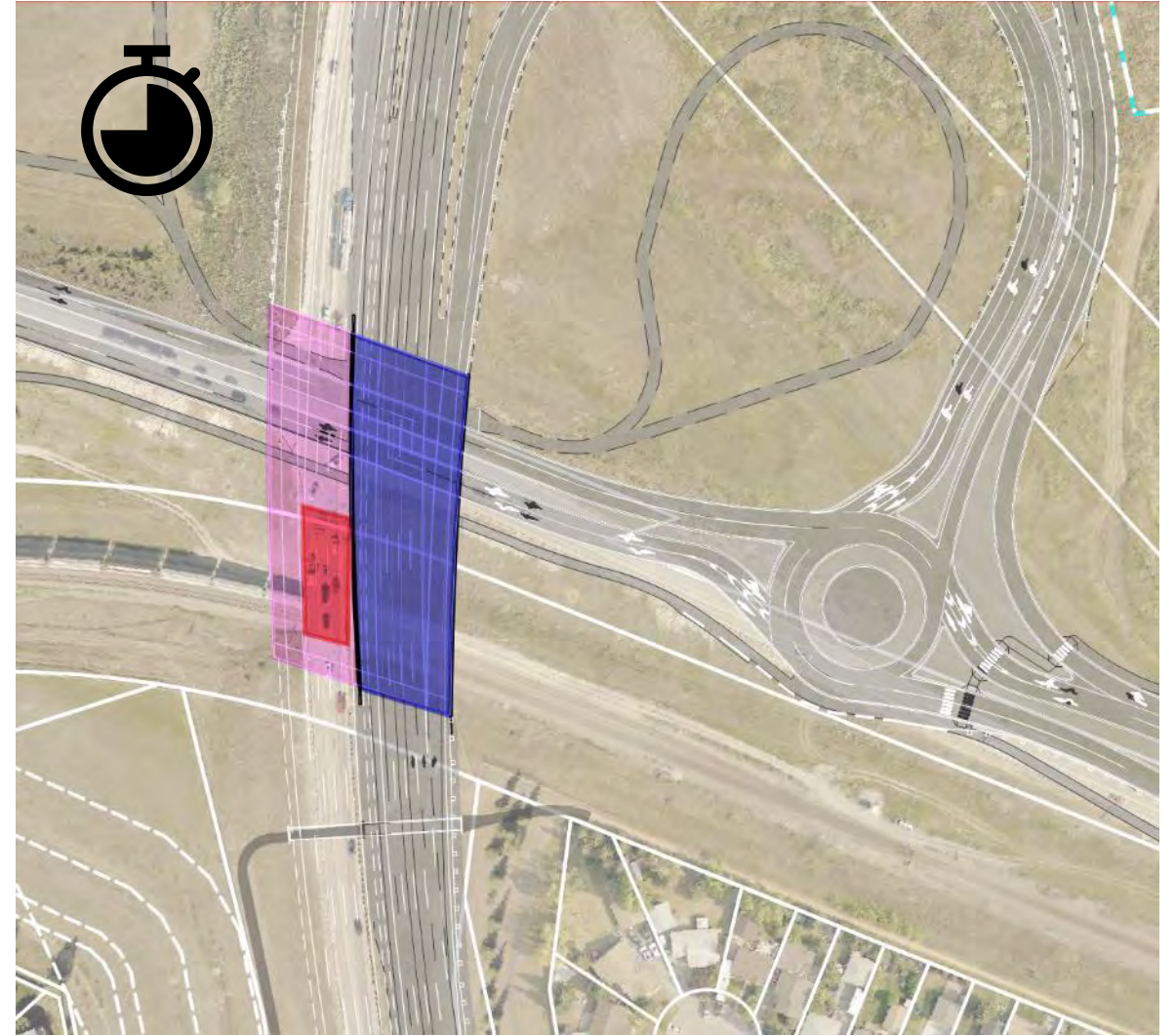
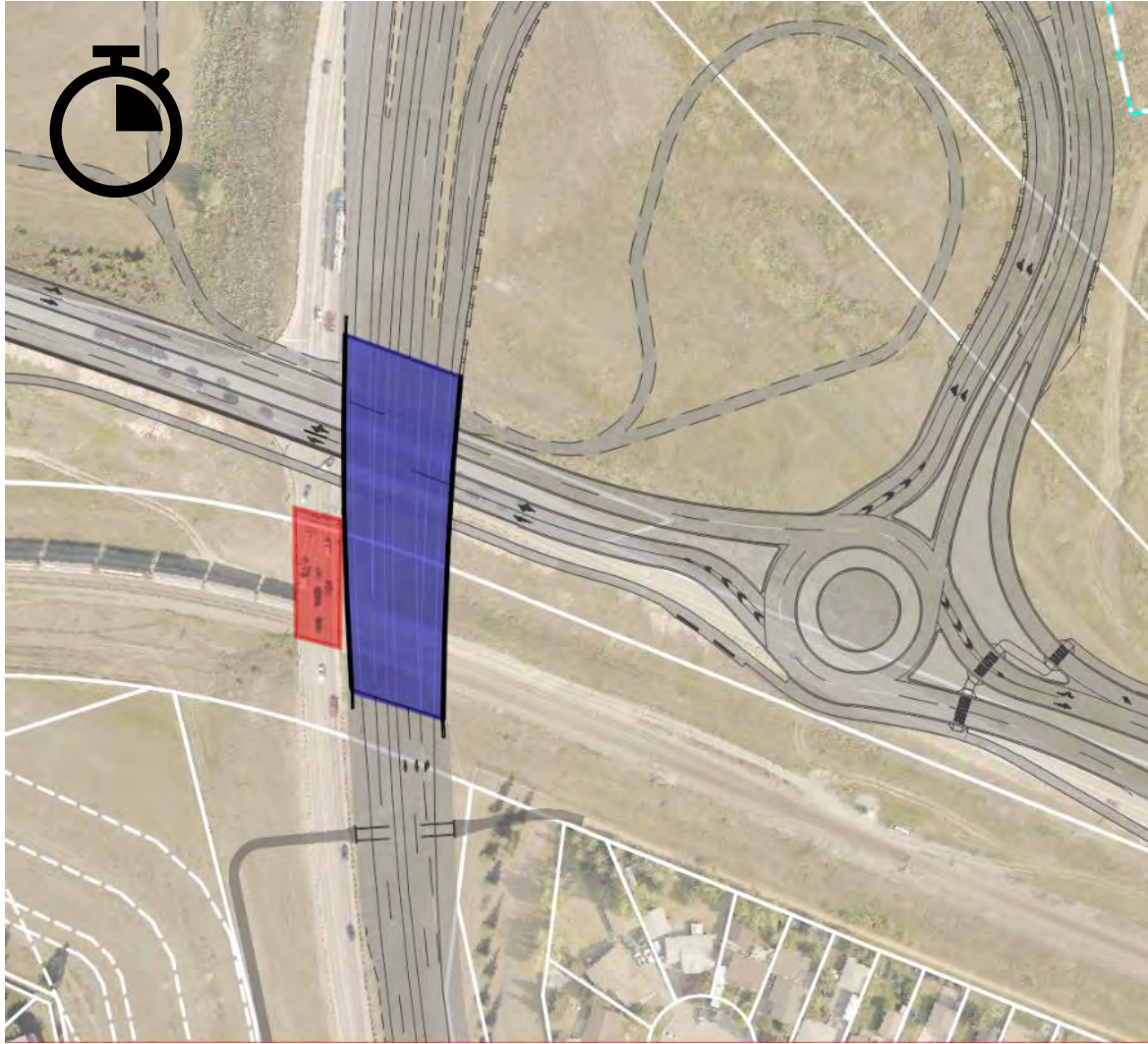


# HIGHWAY 22 BRIDGE OVER CPKC





# EXISTING VS PROPOSED BRIDGE COMPARISON



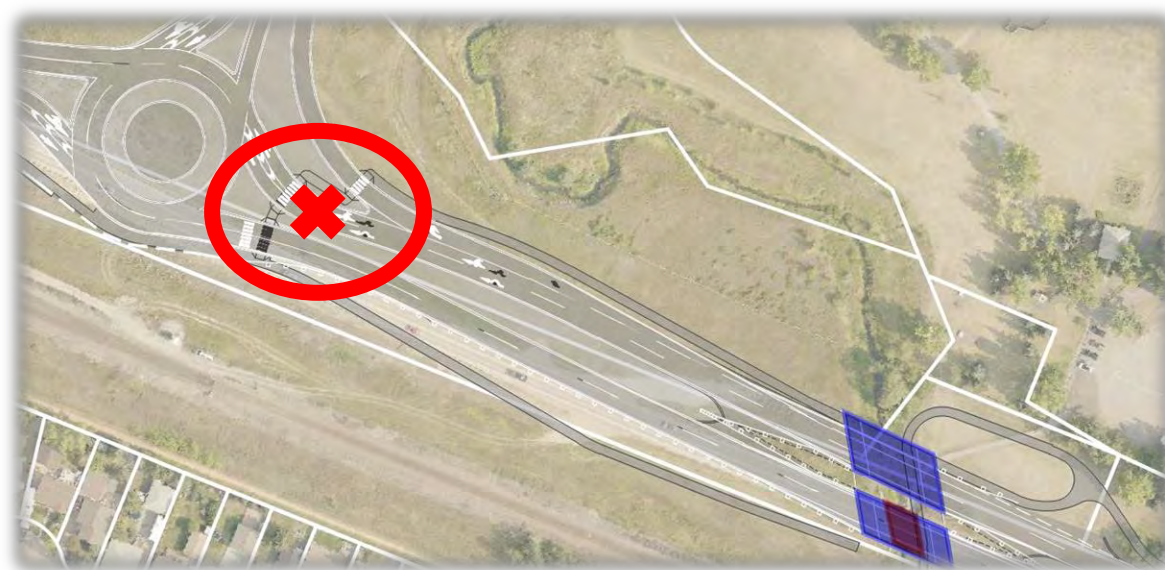


# HWY 1A TWIN BRIDGES OVER BIGHILL CREEK





# PATHWAY DETOUR & DESIGN CHANGES





# GOING UP WITH WALLS





# GOING UP WITH WALLS



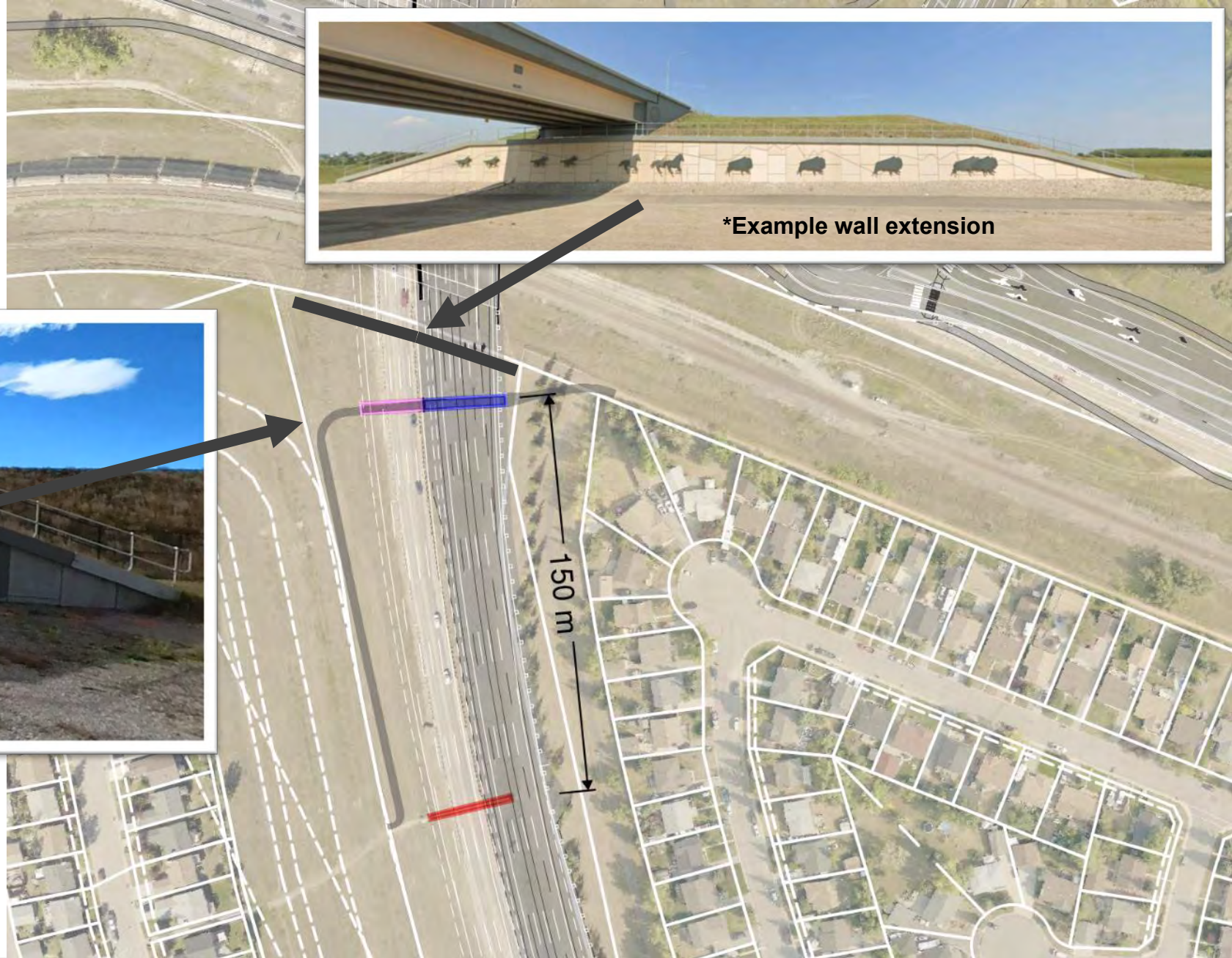


# THE CATTLEPASS





# HWY 22 PEDESTRIAN CULVERT



\*Example wall extension



\*Example pedestrian tunnel



# Utilities









# 3<sup>rd</sup> PARTY UTILITIES





# PIPELINE CORRIDOR





# Questions

